

TRIUMPH

TRIUMPH



At Triumph we want every ride to be safe and enjoyable. Be sure to ride safely, defensively and within the limits of the law, the road conditions and your abilities. Take a riding skills course. Always wear an approved helmet, eye protection and appropriate clothing and always insist that any passenger does the same. Never ride while under the influence of alcohol or drugs. Study your owner's manual and always inspect your Triumph before riding.

All details correct at time of going to press.

Triumph Motorcycles Limited reserve the right to make changes without prior notice.

Please consult your dealer for product and colour availability. Triumph International holds the rights in the word Triumph in classes 10 and 23 to 26.

This brochure is produced using 25% post-consumer waste, 25% pre-consumer waste and 50% virgin wood fibre sourced from well managed forests and other sustainable sources. Pulps used are Elemental Chlorine Free. The printing inks are made using vegetable based oils.

© 2007 Triumph Motorcycles Limited.
All rights reserved.
Triumph Motorcycles Limited,
Normandy Way, Hinckley LE10 3BZ
England

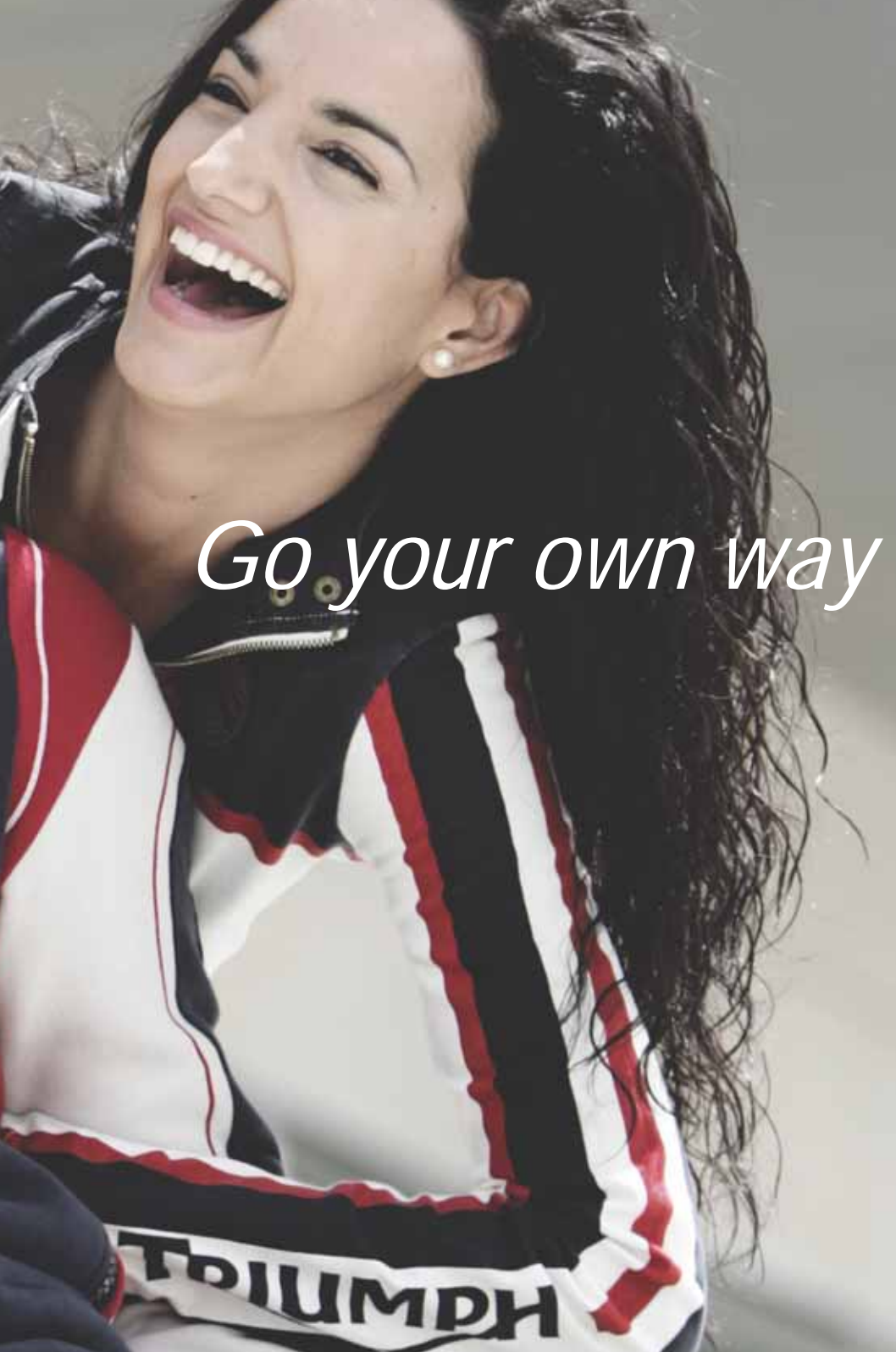
T3864396



To find your local Triumph dealer visit
www.triumphmotorcycles.com

Your local dealer:

CLOTHING
2008



Go your own way

TRIUMPH

	PAGES
Leather Mens	
Urban Sport	4 - 5
Modern Classic	6 - 9
Cruiser	10 - 11
Jeans	11
Leather Ladies	
Urban Sport	12
Modern Classic	13
Jeans	14
Cruiser	15
Textile Mens	
Urban Sport	16 - 18
Modern Classic	19 - 21
Off bike	22 - 23
Jeans	24 - 25
Team	26
Rain	26
Textile Ladies	
Urban Sport	26 - 27
Modern Classic	28
Jeans	29
Gloves & Boots	30 - 31
Casual Corporatewear Mens	
Casual - Zip thru's & shirts	32 - 33
- T Shirts & polos	34 - 37
Team - Fleece, polos & shirts	38
RAT - Fleece, T Shirts & polos	39
Casual Corporatewear Ladies	
Casual & RAT - Zip thru's & shirts	40 - 41
- T Shirts & vests	42 - 43
Baby & Children	
Baby sleepsuits	44
Hoodies & T Shirts	44 - 45
Personal Accessories	
Watches	45
Caps and beanies	46
Belts & Buckles	46
Gift items	47 - 48
Rucksacks and bags	48 - 49
Size Chart	49



Wear your Triumph out

Motorcycle clothing should be just as well designed as the bike you ride. And because it has to look good at the same time as perform in extreme conditions, we only trust this kind of work to one company: Triumph.

The result is performance and casual clothing as individual and stylish as your bike.

Jackets tailored to be just as comfortable when you're riding as when you're not. Cut to account for the difference between riding a Daytona 675 full on, chilling out on a Bonneville or cruising on a Rocket III.

Triumph's leather clothing is only made from full grain leather. We use Sympatex® membrane to let our clothing breathe yet keep wet weather out.

The protective armour we use is supplied by Knox, world leaders in impact protection for motorcyclists - including MotoGP and Superbike riders.

And Triumph test riders wear everything we design for thousands of miles on real roads. Result? Clothing that not only performs, but looks great when you wear it out.

www.triumphmotorcycles.com





MENS LEATHER urban sport

URBAN SPORT FREEWAY JACKET

1.2mm leather

- Fully perforated leather panels on the front, arm and back
- Windproof and water resistant removable liner
- Easily removable CE95 shoulder and elbow protectors
- Side adjustment zippers
- Double stitched impact seams
- Dual density back insert
- Waist connection zipper supplied
- 3M® night reflective front and rear piping
- Small leather back logo
- Broad fitting style

Sizes 38 - 56 UK
48 - 66 EURO

URBAN SPORT PARAGON 2-PIECE SUIT

- 1.2mm leather
- Easily removable CE95 shoulder, elbow and knee protectors
- Double leather seat and knee panels
- Double and triple stitched impact seams
- Keptec® stretch panels
- Racing hump
- Dual density back insert
- 3M® night reflective front and rear piping
- Hip padding
- Velcro attached knee sliders
- Jacket and jeans available separately
- Close fitting style

Jacket sizes 38 - 52 UK
48 - 62 EURO

Jeans sizes 30 - 42 UK
40 - 52 EURO





**URBAN SPORT
ARROW JACKET**

- 1.2mm leather
- Easily removable CE95 shoulder and elbow protectors
- Double stitched impact seams
- Dual density back insert
- 3M® night reflective front and rear piping and fabric panels
- Large leather back logo
- Option to fit fleece neck warmer
- Waist connection zipper supplied
- Air Flow Tech – ventilation air flow panels; arm and back
- Straight fitting style

Sizes 38 - 56 UK
48 - 66 EURO

**URBAN SPORT
GENETIX JACKET**

- 1.2mm leather
- Easily removable CE95 shoulder and elbow protectors
- Double and triple stitched impact seams
- Dual density back insert
- Removable aluminium windproof liner
- Removable fleece neck warmer
- 3M® night reflective front and rear piping
- Hidden ventilation panels
- Waist connection zipper supplied
- Straight fitting style

Sizes 38 - 56 UK
48 - 66 EURO

**URBAN SPORT
HAWK JACKET**

- 1.2mm leather
- Easily removable CE95 shoulder and elbow protectors
- Double stitched impact seams
- Dual density back insert
- 3M® night reflective front and rear piping
- Option to fit fleece neck warmer
- Waist connection zipper supplied
- Straight fitting style

Sizes 38 - 52 UK
48 - 62 EURO



MENS LEATHER modern classic



MODERN CLASSIC PORTLAND JACKET

1mm leather
Easily removable CE95
shoulder and elbow protectors
Double stitched impact seams
Option to fit fleece neck warmer
Waist connection zipper supplied
Stitch detailed back logo
Straight fitting style

Sizes 38 - 52 UK
48 - 62 EURO



MODERN CLASSIC RIVTON JACKET

1mm leather
Easily removable CE95
shoulder and elbow protectors
Double stitched impact seams
3M[®] night reflective front and rear piping
Option to fit fleece neck warmer
Waist connection zipper supplied
Straight fitting style

Sizes 38 - 56 UK
48 - 66 EURO



MODERN CLASSIC
RETRO RACER LEATHER JACKET
1mm leather
Easily removable CE95
shoulder and elbow protectors
Double stitched impact seams
Option to fit fleece neck warmer
Waist connection zipper supplied
Stitched detailed back logo
Straight fitting style

Sizes 38 - 56 UK
48 - 66 EURO



MODERN CLASSIC
AFTERMATH JACKET
1 mm leather
Easily removable CE95
shoulder and elbow protectors
Double stitched impact seams
3M® night reflective front and rear piping
Option to fit fleece neck warmer
Waist connection zipper supplied
Straight fitting style

Sizes 38 - 52 UK
48 - 62 EURO

MENS LEATHER
modern classic



MODERN CLASSIC
MADISON JACKET
Antiqued leather
Printed distressed back logo
Pockets for protectors
Straight fitting style

Sizes 38 - 52 UK
48 - 62 EURO



MODERN CLASSIC
ACE JACKET
1.2mm leather
Easily removable CE95 shoulder
and elbow protectors
Double stitched impact seams
Large printed back logo
Option to fit fleece neck warmer
Waist connection zipper supplied
Straight fitting style

Sizes 38 - 56 UK
48 - 66 EURO





MODERN CLASSIC
RETRO JACKET

1.2mm leather
Easily removable CE95 shoulder
and elbow protectors
Double stitched impact seams
Large leather back logo
Option to fit fleece neck warmer
Waist connection zipper supplied
Straight fitting style

Sizes 38 - 56 UK
48 - 66 EURO



MODERN CLASSIC
ROMERO JACKET

1.2mm leather
Easily removable CE95 shoulder
and elbow protectors
Double stitched impact seams
Large leather back logo
Option to fit fleece neck warmer
Waist connection zipper supplied
Straight fitting style

Sizes 38 - 52 UK
48 - 62 EURO





CRUISER
ROCKET 08 JACKET
 1.2 – 1.4mm soft leather
 Easily removable CE95 shoulder and elbow protectors
 Double stitched impact seams
 Removable aluminium vest liner
 3M® night reflective front and rear piping
 Hidden ventilation panels
 Snap down collar
 Large embossed back logo
 Option to fit a fleece neck warmer
 Waist connection zipper supplied
 Broad fitting style

Sizes 38 - 56 UK
 48 - 66 EURO



CRUISER
SAMFORD JACKET
 1mm leather
 Easily removable CE95 shoulder and elbow protectors
 Double leather stitched impact seams
 Hidden ventilation panels
 Large embossed back logo
 Option to fit fleece neck warmer
 Waist connection zipper supplied
 Broad fitting style

Sizes 38 - 56 UK
 48 - 66 EURO



CRUISER
DEAN JACKET
 1.2-1.4mm soft leather
 Removable aluminium vest liner
 Antiqued brass snaps and zippers
 Large embossed leather back logo
 Broad fitting style

Sizes 38 - 56 UK
 48 - 66 EURO

MENS LEATHER
 cruiser

CRUISER
WESTBOURNE JACKET

- 1.2mm leather
- Easily removable CE95 shoulder and elbow protectors
- Double stitched impact seams
- Removable aluminium windproof liner
- 3M® night reflective front and rear piping
- Hidden ventilation panels
- Large embossed back logo
- Waist connection zipper supplied
- Broad fitting style

Sizes 38 - 56 UK
48 - 66 EURO



JEANS

SPORT LEATHER JEANS III

- 1.2mm leather
- Removable CE95 knee protectors
- Adjustable knee protector pockets
- Double leather seat, knee and thigh panels
- Keptotec® stretch panels
- Double stitched impact seams
- 3M® night reflective fabric
- Hip padding
- Velcro attached knee sliders
- Waist connection zipper supplied
- Air Flow Tech – ventilation air flow panels; thigh

Sizes 30 - 42 UK
40 - 52 EURO

JEANS

WESTERN LEATHER JEANS

- 1mm leather
- Removable CE95 knee protectors
- Adjustable knee protector pockets – allow varying leg lengths
- Double stitched impact seams
- Boot cut

Sizes 30 - 42 UK
40 - 52 EURO

JEANS

CLASSIC LEATHER JEANS III

- 1.2mm leather
- Removable CE95 knee protectors
- Adjustable knee protector pockets
- Double leather knee and seat panels
- Cordura® stretch panels
- Double stitched impact seams
- Hip padding
- Waist connection zipper supplied

Sizes 30 - 42 UK
40 - 52 EURO

MENS LEATHER
jeans



LADIES LEATHER urban sport

URBAN SPORT RAVEN JACKET

1.2mm leather
Easily removable CE95 shoulder and elbow protectors
Double stitched impact seams
Dual density back insert
3M® night reflective front and rear piping
Large leather back logo
Option to fit fleece neck warmer
Waist connection zipper supplied

Sizes XS - 2L INT



URBAN SPORT SABRE JACKET

1.2mm leather
Easily removable CE95 shoulder and elbow protectors
Double stitched impact seams
Dual density back insert
3M® night reflective front and rear piping
3M® night reflective fabric
Large leather back logo
Option to fit fleece neck warmer
Waist connection zipper supplied
Air Flow Tech – ventilation air flow panels; arm and back

Sizes XS - 3L INT



LADIES LEATHER

modern classic



MODERN CLASSIC
EMBER JACKET
1 mm leather
Easily removable CE95 shoulder and elbow protectors
Double stitched impact seams
Stitch detailed back logo
Option to fit fleece neck warmer
Waist connection zipper supplied
Sizes XS - 3L INT



MODERN CLASSIC
RETRO RACER LEATHER JACKET
1mm leather
Easily removable CE95
shoulder and elbow protectors
Double stitched impact seams
Stitched detailed back logo
Option to fit fleece neck warmer
Waist connection zipper supplied
Sizes XS - 3L INT





JEANS
WESTERN JEANS
1mm leather
Removable CE95 knee protectors
Adjustable knee protector pockets – allow
varying knee lengths
Double stitched impact seams
Boot cut

Sizes XS - 3L INT

LADIES LEATHER jeans

LADIES LEATHER cruiser



CRUISER
COMPTON JACKET
1mm leather
Easily removable CE95
shoulder and elbow protectors
Double stitched impact seams
Hidden ventilation panels
Option to fit fleece neck warmer
Waist connection zipper supplied

Sizes XS - 3L INT



CRUISER
ROXY JACKET
1mm leather
Easily removable CE95
shoulder and elbow protectors
Double stitched impact seams
Printed distressed back logo
Option to fit fleece neck warmer
Waist connection zipper supplied

Sizes XS - 3L INT





Take our jackets for a dry run

You can ride a bike in pretty much any kind of weather provided you're dry.

That's why we use Sympatex® in our clothing.

Sympatex® is a clever, polyester-based membrane that allows vapour to escape (so you don't get damp) but keeps wet weather out. It doesn't rely on tiny holes to work, so unlike some technical membranes it won't gradually block with dirt and become less effective over time.

Sympatex® is a German company with 25 years' experience of making waterproof products and whilst they use their ingenuity trying to make our products leak under lab conditions, we do our torture tests with Triumph test riders on real roads.

Result?

Clothing that could keep blotting paper dry in a monsoon.



MENS TEXTILE urban sport



URBAN SPORT

SYMPATEX® PANTHA JACKET

Waterproof, breathable and windproof
 Hitena® nylon water repellent outer fabric*
 Removable CE95 shoulder and elbow protectors
 Removable quilted liner
 Removable dual density back insert
 Printed back logo
 Sleeve width adjusters
 3M® night reflective tape
 Option to fit fleece neck warmer
 Waist connection zipper supplied
 Air Flow Tech – ventilation air flow panels; front, arm and back

Sizes XS - XXXL INT



*Hitena® is a highly abrasion resistant material with a twisted yarn.



URBAN SPORT
SYMPATEX® SPEED JACKET

Waterproof, breathable and windproof
Cordura® and denim water repellent outer fabric
Removable CE95 shoulder and elbow protectors
Removable dual density back insert
3M® night reflective tape
Option to fit fleece neck warmer
Waist connection zipper supplied
Air Flow Tech – ventilation air flow panels; front, arm and back

Sizes 38 - 52 UK
48 - 62 EURO



URBAN SPORT
SYMPATEX® TIGA JACKET
Waterproof, breathable and windproof
Hiltena® nylon water repellent outer fabric*
Removable CE95
shoulder and elbow protectors
Removable quilted liner
Removable dual density back insert
Printed back logo
Sleeve width adjusters
3M® night reflective tape
Option to fit fleece neck warmer
Waist connection zipper supplied
Air Flow Tech – ventilation air flow panels; front, arm and back

Sizes XS - XXXL INT





URBAN SPORT
INTEGRA JACKET
 Fully perforated panels and
 Cordura® construction
 Integrated waterproof cover
 Removable CE95
 shoulder and elbow protectors
 Removable dual density back insert
 Sleeve width adjusters
 3M® night reflective tape
 Waist connection zipper supplied

Sizes 38 - 56 UK
 48 - 66 EURO

*Hitena® is a highly
 abrasion resistant
 material with a
 twisted yarn.



MENS TEXTILE urban sport



URBAN SPORT
RAPTOR # 2 MESH JACKET
 Fully perforated mesh panels and
 Hitena® construction*
 Easily removable CE95 shoulder and
 elbow protectors
 Windproof and water resistant
 removable liner
 Removable dual density back insert
 Sleeve width adjusters
 3M® night reflective piping
 Waist connection zipper supplied
 Option to fit fleece neck warmer

Sizes 38 - 56 UK
 48 - 66 EURO



MENS TEXTILE
modern classic



MODERN CLASSIC
DENIM JACKET
Ring-spun washed denim outer fabric
*Keptec® reinforced shoulder and
elbow panels

Sizes 38 - 56 UK
48 - 66 EURO



MODERN CLASSIC
REVOLUTION JACKET
Waxed cotton water repellent outer fabric
Removable CE95
shoulder and elbow protectors
Hidden Polycordura panels in shoulder
and arms for extra protection
Stitch detailed back logo
3M® night reflective back piping
Option to fit fleece neck warmer
Waist connection zipper supplied

Sizes 38 - 52 UK
48 - 62 EURO

*Keptec is a combination of Kevlar®
and Cordura®, and it is 5 times
stronger than steel, gram for gram
and extremely tear resistant.



MODERN CLASSIC
RETRO PADDOCK JACKET
 Cordura® water repellent outer fabric
 Removable quilted liner
 Removable CE95
 shoulder and elbow protectors
 Hidden ventilation panels
 Large leather back logo
 Option to fit fleece neck warmer
 Waist connection zipper supplied

Sizes S - XXL INT



MODERN CLASSIC
CAMDEN JACKET
 Cotton ripstop water repellent outer fabric
 Removable CE95
 shoulder and elbow protectors
 Hidden polycordura panels in shoulders and
 arms for extra protection
 3M® night reflective front and back piping
 Option to fit fleece neck warmer
 Waist connection zipper supplied

Sizes 38 - 52 UK
 48 - 62 EURO



MODERN CLASSIC
CITY JACKET
 Waxed cotton water repellent outer fabric
 Easily removable CE95 protectors –
 shoulder and elbow
 Removable quilted liner
 Hidden Polycordura panels in shoulder
 and arms for extra protection
 3M® night reflective piping – back
 Option to fit fleece neck warmer
 Waist connection zipper supplied

Sizes S - XXXLINT

MENS TEXTILE
 modern classic



MODERN CLASSIC
ROCHESTER MESH JACKET
 Fully perforated mesh panels and
 Cordura® construction
 Removable CE95
 shoulder and elbow protectors
 Large leather back logo
 Waist connection zipper supplied

Sizes 38 - 56 UK
 48 - 66 EURO



MODERN CLASSIC
RETRO RACER PADDOCK JACKET
 Cordura® water repellent outer fabric
 Removable quilted liner
 Removable CE95
 shoulder and elbow protectors
 Hidden ventilation panels
 Large embroidered back logo
 Option to fit fleece neck warmer
 Waist connection zipper supplied

Sizes S - XXXLINT



MODERN CLASSIC
SYMPATEX® METROPOLIS JACKET
 Waterproof, breathable and windproof
 Schoeller Dynatec water repellent
 outer fabric
 Extremely high performance abrasion
 resistant outer
 Removable quilted liner
 Easily removable CE95
 shoulder and elbow protectors
 3M® night reflective back piping
 Option to fit fleece neck warmer
 Waist connection zipper supplied

Sizes S - XXXLINT





MENS TEXTILE
off bike

OFF BIKE
KENNINGTON JACKET
Washed herringbone cotton outer fabric
Leather back logo
Pockets for shoulder and
elbow protectors

Sizes 38 - 52 UK
48 - 62 EURO



OFF BIKE
FARRINGTON JACKET
Washed cotton outer fabric
Hidden Polycordura reinforced
elbow panels

Sizes 38 - 52 UK
48 - 62 EURO



OFF BIKE
CAMO JACKET
Cotton ripstop camouflage outer fabric
Pockets for shoulder and
elbow protectors

Sizes 38 - 52 UK
48 - 62 EURO



OFF BIKE
STANTON JACKET
Water repellent cotton outer fabric
Removable quilted liner
Pockets for shoulder and
elbow protectors

Sizes S - XXXL INT

MENS TEXTILE jeans



JEANS
SYMPATEX® SPORT PANTS
Waterproof, breathable and windproof
Hitena® nylon water repellent outer fabric*
Easily removable CE95 knee protectors
Adjustable knee protector pockets
Double stitched impact seams
Hip padding
Reinforced knee and seat areas
Velcro attached knee sliders
Air Flow Tech – ventilation air flow panels
3M® night reflective fabric panels
Fabric smocking above knee
3M® logo detail on legs
Waist connection zipper supplied

Sizes 30 - 42 UK
40 - 52 EURO

JEANS
SYMPATEX® RIDING PANTS
Waterproof, breathable and windproof
Hitena® nylon water repellent outer fabric*
Easily removable CE95 knee protectors
Adjustable knee protector pockets
Double stitched impact seams
Hip padding
Removable quilted liner
Reinforced knee and seat areas
Ankle to thigh zippers
Air Flow Tech – ventilation air flow panels
3M® night reflective fabric panels
Fabric smocking above knee
3M® logo detail on legs
Waist connection zipper supplied

Sizes 30 - 42 UK
40 - 52 EURO

JEANS
WESTERN JEANS
Waterproof, breathable and windproof
Cordura® water repellent outer fabric
Easily removable CE95 knee protectors
Adjustable knee protector pockets – allow
varying leg lengths
Double stitched impact seams
Reinforced knee and seat areas
Boot cut

Sizes 30 - 42 UK
40 - 52 EURO

*Hitena® is a highly abrasion resistant material with a twisted yarn.



JEANS
RAPTOR #2 MESH JEANS
 Fully perforated mesh panels and
 Hitena® construction*
 Fully perforated thigh,
 shin and calf mesh panels
 Removable CE95 knee protectors
 Adjustable knee protector pockets
 Double stitched impact seams
 Hip padding
 Ankle to thigh zippers
 3M® night reflective piping
 Fabric smocking above knee
 Waist connection zipper supplied

Sizes 30 - 42 UK
 40 - 52 EURO



JEANS
CARGO PANTS
 Washed cotton fabric
 Keprotec® reinforced panels – knee and seat

Sizes 30 - 42 UK
 40 - 52 EURO



JEANS
DENIM JEANS
 Ring-spun washed denim outer fabric
 Keprotec® reinforced panels – knee and seat
 Variety of leg lengths available

Sizes 30 - 42 UK
 40 - 52 EURO



Triumph Denim Jeans and Cargo Pants are designed for Triumph riders for use on or off the bike. The hidden Keprotec® reinforced panels offer increased abrasion resistance. Keprotec® is a combination of Kevlar® and Cordura®, and it is 5 times stronger than steel, gram for gram and extremely tear resistant.

MENS TEXTILE
team



TEAM
TEAM BLOUSON
Water repellent outer fabric
Large embroidered back logo
Sizes S - XXXL INT



TEAM
COLLEGE JACKET
Melton Body
Large leather back logo
Sizes XS - XXL INT

LADIES TEXTILE
urban sport



URBAN SPORT
RAPTOR #2 MESH JACKET
Fully perforated mesh panels and Hitena® construction*
Easily removable CE95 shoulder and elbow protectors
Windproof and water resistant removable liner
Removable dual density back insert
3M® night reflective piping
Waist connection zipper supplied
Sizes XS - 3L INT



MENS TEXTILE
rain



RAIN
CHEVRON 2 PIECE OVERSUIT
Waterproof nylon fabric
2 large storage pockets on jacket
3M® night reflective chevron shoulder design
Ankle to knee length zippers
Jacket and pants available separately

Jacket Sizes XS - XXL INT

Pants Sizes XS - XXL INT

RAIN
CHEVRON OVERSUIT
Waterproof nylon fabric
Step in – step out design
2 full length zippers
3M® night reflective chevron shoulder design
3M® night reflective slash back stripe
Bumbag for storage

Sizes XS - XXL INT





URBAN SPORT
SYMPATEX® SEETA JACKET
 Waterproof, breathable and windproof
 Hiten® nylon water repellent outer fabric*
 Removable CE95 shoulder and elbow protectors
 Removable quilted liner
 Removable dual density back insert
 Printed back logo
 Sleeve width adjusters
 3M® night reflective tape
 Option to fit fleece neck warmer
 Waist connection zipper supplied
 Air Flow Tech – ventilation air flow;
 front, arms and back

Sizes XS - 3L INT

URBAN SPORT
INTEGRA JACKET
 Fully perforated panels and Cordura® construction
 Integrated waterproof cover
 Removable CE95 shoulder and elbow protectors
 Removable dual density back insert
 Sleeve width adjusters
 3M® night reflective tape
 Waist connection zipper supplied

Sizes XS - 3L INT

*Hiten® is a highly abrasion resistant material with a twisted yarn.

LADIES TEXTILE
modern classic



**MODERN CLASSIC
RETRO RACER PADDOCK JACKET**
Cordura® water repellent outer fabric
Removable quilted liner
Easily removable CE95 shoulder and
elbow protectors
Hidden ventilation panels
Embroidered back logo
Option to fit fleece neck warmer
Waist connection zipper supplied

Sizes XS - 3L INT



**MODERN CLASSIC
DENIM JACKET**
Ring-spun washed denim outer fabric
*Keptec® reinforced shoulder and elbow panels

Sizes XS - 3L INT

*Keptec is a combination of Kevlar®
and Cordura®, and it is 5 times
stronger than steel, gram for gram
and extremely tear resistant.

**MODERN CLASSIC
HENDA JACKET**
Cotton ripstop water repellent outer fabric
Removable CE95 shoulder and elbow protectors
Hidden polycordura panels in shoulders and arms for extra protection
Waist connection zipper supplied

Sizes XS - 3L INT



JEANS

WESTERN JEANS

Waterproof, breathable and windproof
Cordura® water repellent outer fabric
Easily removable CE95 knee protectors
Adjustable knee protector pockets
Double stitched impact seams
Reinforced knee and seat areas
Boot cut

Sizes XS - 3L INT



JEANS

RAPTOR #2 MESH JEANS

Fully perforated mesh panels and
Hitena® construction*
Fully perforated
thigh, shin and calf mesh panels
Removable CE95 knee protectors
Adjustable knee protector pockets
Double stitched impact seams
Ankle to thigh zippers
3M® night reflective piping
Waist connection zipper supplied

Sizes XS - 3L INT



JEANS

SYMPATEX® RIDING PANTS

Waterproof, breathable and windproof
Hitena® nylon water repellent outer fabric*
Easily removable CE95 knee protectors
Adjustable knee protector pockets
Double stitched impact seams
Removable quilted liner
Reinforced knee and seat areas
Ankle to thigh zippers
Air Flow Tech – ventilation air flow panels
3M® night reflective fabric panels
3M® logo detail on legs
Waist connection zipper supplied

Sizes XS - 3L INT



JEANS

DENIM JEANS

Ring-spun washed denim outer fabric
Keprotect® reinforced knee and seat panels
Variety of leg lengths available

Sizes XS - 3L INT



LADIES TEXTILE
jeans

Triumph Denim Jeans are designed for Triumph riders for use on or off the bike. The hidden Keprotect® reinforced panels offer increased abrasion resistance. Keprotect® is a combination of Kevlar® and Cordura®, and it is 5 times stronger than steel, gram for gram and extremely tear resistant.

*Hitena® is a highly abrasion resistant material with a twisted yarn.

MENS AND LADIES GLOVES



HIGHWAY GLOVE
All leather construction
Double leather palm section
Kepritec® abrasion panels
Double leather impact panels
Ventilated finger panels
Available in ladies sizes

Mens S - XXL INT
Ladies LS - LL INT



PERFORATED HIGHWAY GLOVE
Perforated version of the Highway Glove
Available in ladies sizes

Mens S - XXL INT
Ladies LS - LL INT



RAPTOR VENTED GLOVE
Perforated mesh fabric and leather construction
Ventilated hard knuckle panels
Slimline sports cuff with adjuster
Kepritec® abrasion panels
Available in ladies sizes

Mens S - XXL INT
Ladies LS - LL INT



HARD CARBON GLOVE
Full knuckle carbon weave panel
Kepritec® abrasion panels
Double leather impact panels
Raised wrist padding
3M® night reflective piping
Ventilated finger sections
Available in ladies sizes

Mens S - XXL INT
Ladies LS - LL INT



COUGA GLOVE
Hitena® and leather construction*
Hard knuckle panels
Kepritec® abrasion panels
Raised wrist padding
Non slip palm and finger panels

Mens XS - XXL INT



SYMPATEX® ALL LEATHER II GLOVE
Waterproof, breathable and windproof
All leather construction
Kepritec® abrasion panels
Raised wrist padding
3M® night reflective piping
Thinsulate lining
Visor wipe

Mens XS - XXL INT



ROADSTER GLOVE
Hitena® and leather construction*
Ventilated hard knuckle panels
Kepritec abrasation panels
Non slip palm panels
3M® night reflective piping
Raised wrist padding
Double strap wrist fastening

Mens XS - XXL INT



SYMPATEX® EXPEDITION GLOVE
Waterproof, breathable and windproof
Hitena® and leather construction*
Hard knuckle panels
Kepritec® abrasion panels
Raised wrist padding
3M® night reflective piping
Thinsulate lining
Visor wipe
Double strap wrist fastening

Mens XS - XXL INT

*Hitena® is a highly abrasion resistant material with a twisted yarn.

MENS AND LADIES BOOTS



SYMPATEX® EXPEDITION II BOOT
 Waterproof, breathable and windproof
 Full leather construction
 Gear change protector
 Ankle, heel and shin guards
 Logos embossed
 3M® night reflective panel
 Non slip rubber sole
 Toe slider

Sizes 6.5 - 11 UK
 40 - 46 EURO



TEAM BOOT
 Ballistic nylon and leather construction
 Non slip rubber sole

Sizes 6.5 - 11 UK
 40 - 46 EURO

SYMPATEX® EXPLORER II BOOT
 Waterproof, breathable and windproof
 Leather and nubuck construction
 Gear change protector
 Ankle and heel guards
 Velcro fastening
 3M® night reflective panel
 Non slip rubber sole
 Available in ladies sizes

Sizes 4 - 11 UK
 37 - 46 EURO



SYMPATEX® TRITECH II BOOT
 Waterproof, breathable and windproof
 Leather construction
 Ankle guards
 3M® night reflective panel
 Non slip rubber sole
 Available in ladies sizes

Sizes 4 - 11 UK
 37 - 46 EURO



HIGHWAY BOOT
 Full leather construction
 Antiqued Adjusters
 Logos embossed
 Non slip rubber sole
 Available in ladies sizes

Sizes 4 - 11 UK
 37 - 46 EURO



BROWN ZIP THRU
Brown

Sizes S - XXL INT



STRIPE ZIP THRU
Navy

Sizes S - XXL INT



HOODIE #3
Grey

Sizes S - XXL INT



RIDERS ZIP THRU
Navy/Red/Ecru

Sizes S - XXL INT



MENS CASUAL
CORPORATEWEAR
zip thru's and shirts



FASHION SHIRT #4
Black
Slim fit
Sizes S - XXL INT



CAMO STRIPE ZIP THRU
Black
Sizes S - XXL INT



URBAN ZIP THRU
Black
Sizes S - XXL INT



OVERSHIRT
Black
Sizes S - XXL INT



FASHION SHIRT #4
Grey
Slim fit
Sizes S - XXL INT



MENS CASUAL
CORPORATEWEAR
sixty8 T shirts



Triumph's range of vintage sixty8 T-shirts are inspired by classic images from our archive of vintage tees, period ads and posters. With a modern re-mix, these T-shirts are the authentic alternative.

Triumph Breaks World Speed Record
214
MILES PER HOUR
(345 K/hr)
TRIUMPH

September 6th, 1956
Bonneville Salt Flats, Utah

This T shirt celebrates a very special individual feat. On September 6th 1956, Johnny Allen from Texas broke the world land speed record at the Bonneville Salt Flats Utah, one of the hottest places on earth.

He used a 650cc unsupercharged, streamlined Triumph and managed a blistering speed of 214mph for one mile. Remarkably, only standard parts were used.

'Land Speed Record' is from the range of Triumph vintage sixty8 T shirts.



LAND SPEED RECORD
Mustard

Sizes S - XXL INT



POCKET POLO
Black

Sizes S - XXL INT



DYLAN
Navy
Sizes S - XXL INT



DYLAN
White
Sizes S - XXL INT



CYCLEDELIC
Black
Sizes S - XXL INT



VIVA KNIEVEL
Blue
Sizes S - XXL INT



SIXTY8
Red
Sizes S - XXL INT



MOD CRUSHERS CLUB
Navy
Sizes S - XXL INT



FLYING BIKE
Orange
Sizes S - XXL INT



DECO #2
Racing Green
Sizes S - XXL INT

MENS
CASUAL
CORPORATEWEAR
T shirts



CAMO BIKE
Green
Sizes S - XXL INT



RIDERS STRIPE
Brown
Sizes S - XXL INT



EST 1902
Navy
Sizes S - XXL INT



GAMBLING
Burgundy
Sizes S - XXL INT



LOGO
Black
Sizes S - XXL INT



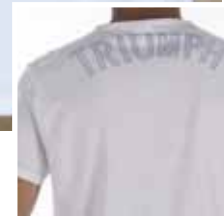
LOGO
White
Sizes S - XXL INT



GB
Navy
Sizes S - XXL INT



V NECK
White
Sizes S - XXL INT



RUSSIAN IMPORTER
Black
Sizes S - XXL INT



PUNK
Black
Sizes S - XXL INT



STUNT TEAM
Grey
Sizes S - XXL INT



ROCKET III #5
Black
Sizes S - XXL INT



SCRAMBLER
Red
Sizes S - XXL INT



FABULOUS HINCKLEY
Black
Sizes S - XXL INT



CAMO LOGO
Black
Sizes S - XXL INT



2 IN 1
Black
Sizes S - XXL INT



ROAD DESTROYER
Ecru/Brown
Sizes S - XXL INT



TRIUMPH RACING
Black
Sizes S - XXL INT



BONNEVILLE GUITARS
Brown
Sizes S - XXL INT



TEAM FLEECE
Navy
Sizes XS - XXL INT

TEAM POLO
Navy
Sizes S - XXL INT

TEAM SHIRT #2
Navy
Straight fit
Sizes XS - XXXL INT



RAT T-SHIRT
Navy
Sizes S - XXL INT

MENS CASUAL
CORPORATEWEAR
team and RAT





RAT T-SHIRT
White

Sizes S - XXL INT

RAT STRIPE POLO
Grey/Black

Sizes S - XXL INT



RAT TRI-DRI MENS PERFORMANCE TOP
Black/Grey

Sizes S - XXL INT



RAT TRI-DRI POLO SHIRT
Black/Grey

Sizes S - XXL INT



RAT TRI-THERMO FLEECE
Black

Sizes S - XXL INT

RAT products are specially developed with Triumph's own riders in mind, this is a range of clothing for wearing off bike or under your motorcycle kit.

The range includes clothing with a high level of technical performance to give you maximum comfort in all riding conditions: Tri-Thermo to keep you warm without the need for bulky layers; Tri-Dri to wick moisture away from the body. Thinking of crossing the Gobi on a sunny day? No sweat.

LADIES CASUAL CORPORATEWEAR

VELOUR ZIP THRU
Plum

Sizes XS - 3L INT



MOTORCYCLE CLUB ZIP THRU
Ecru/Navy/Red

Sizes XS - 3L INT





RAT TRI-DRI LADIES PERFORMANCE TOP
Black/Grey

Sizes XS - 3L INT

RAT products are specially developed with Triumph's own riders in mind, this is a range of clothing for wearing off bike or under your motorcycle kit.

The range includes clothing with a high level of technical performance. Tri-Dri allows perspiration to wick away from the body.



FASHION SHIRT #4
Grey or Black

Sizes XS - 3L INT



CAMO STRIPE ZIP THRU
Black

Sizes XS - 3L INT





DYLAN
White

Sizes XS - 3L INT



DYLAN
Navy

Sizes XS - 3L INT



MOTORCYCLE CLUB
Red

Sizes XS - 3L INT



SNAP VEST
White

Sizes XS - 3L INT





STRETCH RIB
Black - Long sleeve
Sizes XS - 3L INT



LOGO
Black
Sizes XS - 3L INT



LOGO
White
Sizes XS - 3L INT



CYCLEDELIC
Black
Sizes XS - 3L INT



CAMO BIKE
Green
Sizes XS - 3L INT



TRIUMPH LOVES TO ROCK
Grey Marl
Sizes XS - 3L INT



BONNEVILLE GUITARS
Plum
Sizes XS - 3L INT



CAMO LOGO
Black - Long sleeve
Sizes XS - 3L INT

BABY AND CHILDREN



SLEEPSUITS - PACK OF 2
White/Blue

Years 1 - 24 Months INT



STITCHED BIKE
Green

Years 3 - 11 INT



HOODIE #2
Navy

Years 3 - 11 INT



BONNIE BIKE
Ecrú

Years 3 - 11 INT



HOODIE #1
Navy

Years 3 - 11 INT



JIGSAW
Red

Years 3 - 8 INT

PERSONAL ACCESSORIES

STRIPED LOGO
Grey

Years 3 - 11 INT



SPORTS CLASSIC II
42mm stainless steel case
Brown leather strap
10 ATM

M9413608



ANALOGUE DIGITAL
42mm stainless steel case
Black leather strap
5 ATM

M9413808

NINE BIKES
Black

Years 3 - 11 INT



LADIES STAINLESS STEEL WITH DIAMONDS
8 full cut diamonds pieces on bezel
Black leather strap
5 ATM

M9413708



CARBON CHRONO 4
38mm stainless steel case
Stainless steel strap
Carbon Fibre Face
5 ATM

M9413508





SCARF
170cm x 17cm
M8801208



BEANIE ECRU
M8801308



BLACK BEANIE
M8801408



RIDER 02 CAP
M9392608



EST 1902 CAP
M9392708



UNION JACK WING CAP
M9392405



BLACK LOGO CAP
M9392808

BELT #2
Black with silver rivets

Size 1 M9291408 80cm - 98cm

Size 2 M9291508 86cm - 104cm



BRASS TANK BUCKLE
M9280506



BELT #1
Brown with multi colour rivets

Size 1 M9291208 80cm - 98cm

Size 2 M9291308 86cm - 104cm



CHEQUER BELT BUCKLE
M9282608



UNION SHIELD BUCKLE
M9281505

JEANS BELT

Extra small M9290405

Small M9290505

Medium M9290605

Large M9290705

Extra large M9290805



TRIUMPH LOGO BLACK MUG
M2182606



EST 1902 MUG
M2183008



MOD CRUSHERS CLUB MUG
M2183108



CARBON BALL POINT #2
M8000306



LIGHTER #12
M9440006-FH

LIGHTER #14
M9440007-CH



CLASSIC WALLET
M9382108

RIVET WALLET
M9382008



CARD HOLDER
M9382208



BEACH TOWEL
180cm x 102cm
M9360006



CHEQUER KEY FOB

M9480008

TRIANGULAR KEY FOB

M9460095

RUBBER KEY FOB #2

M9471005



PATCHES

1. ROUND STRIPE

M9481705

2. HALF UNION

M9481805

3. WHITE WING

M9481905

4. BLUE WING

M9482005

5. UNION FLAG WING

M9482105

6. SIXTY8

M9482306

7. CHEQUER

M9482607

8. RIDERS

M9482406

9. WORLDS FASTEST

M9482708

10. WORLD

M9482206

11. RECTANGLE

M9480095



GB MOUSEMAT

M9120108



MONEY BOX - CERAMIC

M2181105



BOTTLE OPENER #2

M9501306

CUFFLINKS

M9500506



COLLECTORS LIMITED EDITION ROCKET III

Scale 1:12th die cast scale model

Black M2002104 - BLK

Grey M2002104 - GRT



BUFFS

1. SPORTS BUFF #5

M9431808

2. POLAR BUFF #4

M9431908

3. CLASSIC BUFF #5

M9432008

4. CRUISER BUFF #3

M9432108

Micro fibre neck tubes

A5 NOTEBOOK SPEED TRIPLE

M9504007



A5 NOTEBOOK BONNIE

M9503006

UNION FLAG CHAIR

M9422006



ROCKET III PRINT

M2008108



SPEED TRIPLE PRINT

M2008208

Collectors Limited Edition Fine Art Prints
Limited Edition of 500
Each individually numbered
Signed by John Bloor
Certificate of authenticity
Size 50cm x 70cm

DAYTONA 675

Scale 1:18th scale model

M2002408



Variety of other models available

FACTORY STICKER SET #5

M9110208



KIT BAG

40 Litre capacity
Key lock included

M9343105





COURIER PC BAG
Ballistic Nylon Tough fabric
Cushioned pillow tech section
Key ring clip
Open mesh pocket
Phone pocket
Retractable id. tag
Waist band restraint

M9343206



HELMET RUCKSACK
16/20 Litre extendable capacity
Helmet carrying compartment
Multi pocket design
Key lock included

M9343005



SIZE CHART

MENS SIZE CHART

SHOE SIZES:

UK	Euro	US
6 1/2	40	7 1/2
7	41	8
8	42	9
9	43	10
9 1/2	44	10 1/2
10	45	11
11	46	12

JACKET SIZES:

UK	Euro	US	INT	Chest cm/in	Waist cm/in
34	44	34	XS	79-84/31-33	69-74/27-29
36	46	36	XS	84-89/33-35	74-79/29-31
38	48	38	S	89-94/35-37	79-84/31-33
40	50	40	S	94-99/37-39	84-89/33-35
42	52	42	M	99-104/39-41	89-94/35-37
44	54	44	M	104-109/41-43	94-99/37-39
46	56	46	L	109-114/43-45	99-104/39-41
48	58	48	L	114-119/45-47	104-109/41-43
50	60	50	XL	119-124/47-49	109-114/43-45
52	62	52	XL	124-129/49-51	114-119/45-47
54	64	54	XXL	129-134/51-53	119-124/47-49
56	66	56	XXL	134-139/53-55	124-129/49-51

JEANS SIZES:

UK	Euro	US	INT	Waist cm/in	Hips cm/in	Inseam cm/in
30	40	30	XS	74-79/29-31	96-100/38-39	86/34
32	42	32	S	79-84/31-33	100-104/39-41	87/34
34	44	34	M	84-89/33-35	104-108/41-42	88/35
36	46	36	L	89-94/35-37	108-112/42-44	89/35
38	48	38	XL	94-99/37-39	112-116/44-45	90/35
40	50	40	XXL	99-104/39-41	116-120/45-47	91/36
42	52	42	XXXL	104-109/41-43	120-124/47-48	92/36

LADIES SIZE CHART

SHOE SIZES:

UK	Euro	US
4	37	5 1/2
5	38	6 1/2
6	39	7

JACKET SIZES:

UK	Euro	US	INT	Chest cm/in	Waist cm/in
10	38	8	XS	85-90/33-35	65-70/25-27
12	40	10	S	90-95/35-37	70-75/27-29
14	42	12	M	95-100/37-39	75-80/29-31
16	44	14	L	100-105/39-41	80-85/31-33
18	46	16	2L	105-110/41-43	85-90/33-35
20	48	18	3L	113-118/43-45	92-98/36-39

JEANS SIZES:

UK	Euro	US	INT	Waist cm/in	Hips cm/in	Inseam cm/in
10	38	8	XS	65-70/25-27	95-100/37-39	75-80/29
12	40	10	S	70-75/27-29	100-105/39-41	76-81.5/30
14	42	12	M	75-80/29-31	105-110/41-43	77-83/31
16	44	14	L	80-85/31-33	110-115/43-45	78-84.5/32
18	46	16	2L	85-90/33-35	115-120/45-47	79-86/33
20	48	18	3L	94-99/37-39	122-127/48-50	86-90/34

BABY SIZE CHART

Age	Height	Weight
1-3 months	60cm	5.5kg
	23.75in	12lb's 2oz
3-6 months	69cm	8kg
	27in	17lb's 10oz
6-9 months	72cm	9kg
	28.5in	19lb's 13oz
9-12 months	76cm	10kg
	30in	22lb's
12-18 months	83cm	11kg
	32.5in	24lb's 4oz
18-24 months	90cm	12.5kg
	35.5in	27lb's 7oz

CHILDRENS SIZE CHART

Age	Height	Weight	Chest
3-4 years	104cm	12kg-15kg	78cm
	40in	28lb's-34lb's	30in
5-6 years	116cm	15kg-18kg	82cm
	45in	34lb's-40lb's	32in
7-8 years	128cm	18kg-21kg	86cm
	50in	40lb's-46lb's	34in
9-11 years	140cm	21kg-24kg	90cm
	55in	46lb's-55lb's	36in

NON-ILLUSTRATED PRODUCTS

- Protectors
 • L&K Protector Set (2pc) M2250001
 • Dual Density Back Insert M2250101
 • Knox Protector Set (2pc) M2250203

Fleece Neck Warmer M2030000

- Hangers
 • Coat Hanger M8890002
 • Trouser Hanger M8890108
 • Shirt Hanger M8890203

P.O.S. Display

- Buff Totem M9410508
 • Watch Display Unit M9412405

Mens Integra W/Proof Cover

- 38 M3523805
 • 40 M3524005
 • 42 M3524205
 • 44 M3524405
 • 46 M3524605
 • 48 M3524805
 • 50 M3525005
 • 52 M3525205
 • 54 M3525405
 • 56 M3525605

Ladies Integra W/Proof Cover

- XS M3520005
 • S M3520105
 • M M3520205
 • L M3520305
 • 2L M3520405
 • 3L M3520505

Size chart is only a guide. Sizes of some products may vary due to style and cut of garments. Please visit your Triumph dealer.